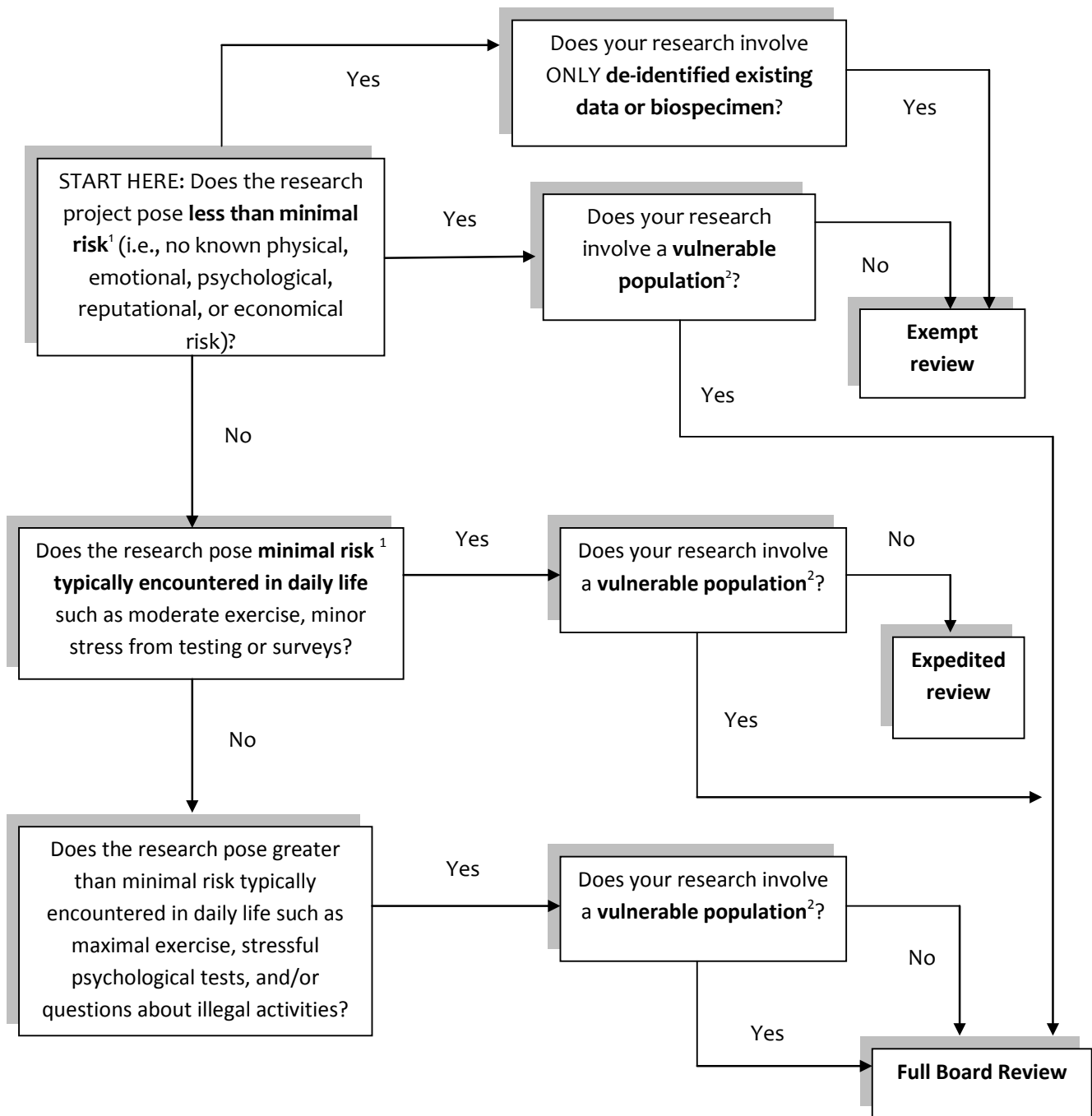


## Review Category Flowchart



**NOTE** the exception on children in normal curriculum/class settings. In such cases, these types of research may qualify for EXEMPT review.

<sup>1</sup> Minimal risk means that the probability and magnitude of harm or discomfort anticipated in the research are not greater in and of themselves than those ordinarily encountered in daily life or during performance of routine physical or psychological examinations or tests [Code 45 CFR 46.102(i)]

<sup>2</sup> Vulnerable subjects include children, the elderly, prisoners, pregnant women, students in special circumstances, handicapped or mentally disabled persons, among other populations.